

KEY#	PART#	DESCRIPTION
2	182008	HIGH CAPACITY RESERVOIR / CHAMBER ASSEMBLY
3	182070	PUMP
4	181635	DRIVE SUPPORT SHROUD
5	181653	LEFT BUSHING
6	181654	RIGHT BUSHING
7	181954	DRIVE LEVER ASSEMBLY
8	181669	PUMP PISTON ASSEMBLY
9	181665	STANDARD AGITATOR
10	181641	PIVOT CLIP
11	181648	BACK HANDLE
12	181826	PRESSURE REGULATOR (25 PSI)
13	181659	SHOULDER HARNESS (STANDARD)
14	181889	SHOULDER HARNESS (DELUXE)
15	181824	21" WAND ASSEMBLY
15-SS	***	21" WAND ASSEMBLY, STAINLESS STEEL
16	183176	SHUT-OFF ASSEMBLY, SMITH PRO (BACKPACK VER.)
17	181649	SHROUD ROD

**KIT #27 181446 CAP ASSEMBLY KIT**

27A	181444	TANK CAP
27B	171015	CHECK VALVE

**KIT #28 181564 FILTER BASKET ASSEMBLY KIT**

28A	181445	FILTER BASKET GASKET
28B	181519	FILTER BASKET

**KIT #29 181788 BOLT-ON PUMP HANDLE KIT (STANDARD)**

29A	181922	STANDARD PUMP HANDLE ASSEMBLY (GRIP INCLUDED)
29B	181753	BOLT-ON DRIVE SHAFT
29C	181756	HEX BOLT
29D	181757	LOCK NUT
29E	181954	DRIVE LEVER ASSEMBLY
29F	182021	DRIVE LEVER BOLT, 40mm (2)
29G	181906	DRIVE LEVER FLAT WASHER (2)
29H	181908	DRIVE LEVER LOCK WASHER (2)
29I	181907	DRIVE LEVER NUT (2)

**KIT #30 181789 BOLT-ON PUMP HANDLE KIT (FOLDING)**

30A	181923	FOLDING PUMP HANDLE ASSEMBLY (GRIP INCLUDED)
30B	181753	BOLT-ON DRIVE SHAFT
30C	181756	HEX BOLT
30D	181757	LOCK NUT
30E	181772	RETAINER STRAP
30F	181954	DRIVE LEVER ASSEMBLY
30G	182021	DRIVE LEVER BOLT, 40mm (2)
30H	181906	DRIVE LEVER FLAT WASHER (2)
30I	181908	DRIVE LEVER LOCK WASHER (2)
30J	181907	DRIVE LEVER NUT (2)

**SERVICE KITS, PARTS & ACCESSORIES ARE AVAILABLE BY CONTACTING**

The Fountainhead Group, Inc. - Customer Service Center  
 Monday - Friday 8 A.M. - 5 P.M., EST  
 Toll Free: 1-800-311-9903  
 e-mail: Info@TheFGL.com  
 Access online at: www.TheFountainheadGroup.com

**KIT #31 181910 SMITH PRO SHUT-OFF SERVICE KIT**

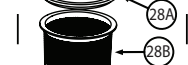
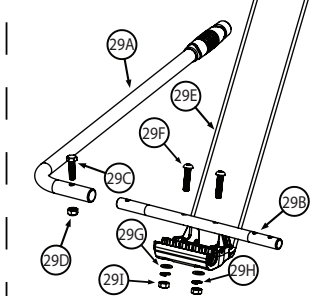
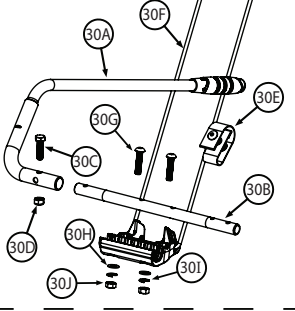
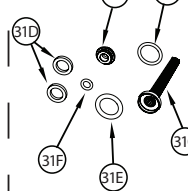
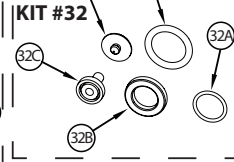
31A	181840	POPPET SEAL
31B	181493	VALVE BODY O-RING
31C	181468	FILTER
31D	181812	FLAT NOZZLE SEAL (2)
31E	181810	WAND O-RING
31F	181805	ADJUSTABLE NOZZLE O-RING

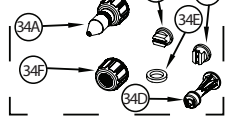
**KIT #32 181909 BACKPACK SERVICE KIT**

32A	171488V	RESERVOIR / CHAMBER O-RING
32B	171740	PUMP GASKET
32C	181668	TANK GROMMET
32D	171487V	PISTON O-RING
32E	171015	CHECK VALVE

\*\*\* Available in Kit 182870

**KIT #27**

**KIT #28**

**KIT #29**

**KIT #30**

**KIT #31**

**KIT #32**

**KIT #33**

**KIT #34**

**KIT #33 181869 POLY NOZZLE KIT**

33A	181822	POLY ADJUSTABLE NOZZLE
33B	180168	YELLOW FLAT FAN NOZZLE (LOW VOLUME)
33C	180097	RED FLAT FAN NOZZLE (HIGH VOLUME)
33D	180266	FOAMING NOZZLE
33E	181812	FLAT NOZZLE SEAL
33F	181804	NOZZLE CAP NUT

**KIT #34 181870 BRASS NOZZLE KIT**

34A	181823	BRASS ADJUSTABLE NOZZLE
34B	180168	YELLOW FLAT FAN NOZZLE (LOW VOLUME)
34C	180097	RED FLAT FAN NOZZLE (HIGH VOLUME)
34D	180266	FOAMING NOZZLE
34E	181812	FLAT NOZZLE SEAL
34F	181804	NOZZLE CAP NUT

**KIT #35 181825 14 PSI PRESSURE REGULATOR KIT**

35	181825	14 PSI PRESSURE REGULATOR ASSEMBLY
----	--------	------------------------------------