

SEIDO™

Ornamental Fungicide



An American Vanguard Company

A NOVEL FUNGICIDE FOR EFFECTIVE CONTROL OF POWDERY MILDEW ON ORNAMENTALS

Product Information Bulletin

678

GENERAL INFORMATION

SEIDO is a locally systemic fungicide with preventative and early-curative control of powdery mildew on ornamental plants grown in commercial greenhouses and nurseries.

SEIDO is most effective when used as a protectant applied prior to disease onset. Depending on environmental conditions and disease risk, users may experience protection for up to 14 days after application.

SEIDO is a flowable suspension concentrate formulation that contains 2.5 lbs. of pyriofenone per gallon (300 grams per liter).

Common Name: Pyriofenone

Class: Benzoylpyridine

PYRIOFENONE	GROUP	50	FUNGICIDE
-------------	-------	----	-----------

Packaging: 1 quart (32 fl. oz.), 4 per case

RESTRICTED ENTRY INTERVAL (REI) AND SIGNAL WORD

REI = **4 hours** Signal Word = **CAUTION**

PERSONAL PROTECTIVE EQUIPMENT (PPE)

Applicators and other handlers must wear:

- Long-sleeved shirt
- Long pants
- Chemical-resistant gloves made of any waterproof material
- Shoes plus socks

MODE OF ACTION

SEIDO is a member of the aryl-phenyl-ketones class of chemistry, MOA group 50. It targets the actin/myosin/fimbrin function.

USE SITES

SEIDO may be applied to ornamentals and bedding plants grown in greenhouses and outdoor nurseries.

DISEASES CONTROLLED

- Powdery mildew

BENEFITS OF SEIDO

- **SEIDO's** new chemical class and novel mode of action (group 50) make it an excellent resistance management tool.
- **SEIDO** stops powdery mildew from disease onset through early infection.
- Through translaminar movement and redistribution on the leaf surface by vapor activity, **SEIDO** offers additional disease protection to untreated leaf surfaces.
- **SEIDO** stays where you need it, demonstrating excellent rainfastness in as little as 30 min.
- Get back to work faster with **SEIDO's** 4-hour REI
- Easy-to-use formulation means **SEIDO** can be used as a stand-alone application or in combination with an appropriate tank-mix partner for broad spectrum disease control.

APPLICATION AND RATES

Foliar spray: Apply **SEIDO** as a foliar spray in sufficient spray solution to thoroughly wet the foliage to the point of run off. **SEIDO** applications should begin when conditions are favorable for disease development or when plants first exhibit disease symptoms. Development trials have shown **SEIDO** to be safe and effective at all stages from germination to mature crop.

Rate: 4 to 5 fl. oz. per 100 gallons. Applications should be made on a 7-14 day interval.

NOTE: Applications of **SEIDO** should be made in conjunction with good cultural practices. **SEIDO** applications should be made at the highest rate and the shortest interval when disease risk is high. **SEIDO** performance can be improved with the addition of an adjuvant and/or surfactant at labeled rates.

SEIDO may be used through pressurized irrigation systems such as overhead boom and micro-irrigation.

TANK MIXING

To determine the physical compatibility of **SEIDO** with any other product, use a small container to mix a small amount of spray solution, containing all ingredients in the same order and ratio as the anticipated use. If any indication of physical incompatibility develops, do not use and discard. Indications of physical incompatibility usually appear within 5-15 minutes of mixing.

Vapor Activity

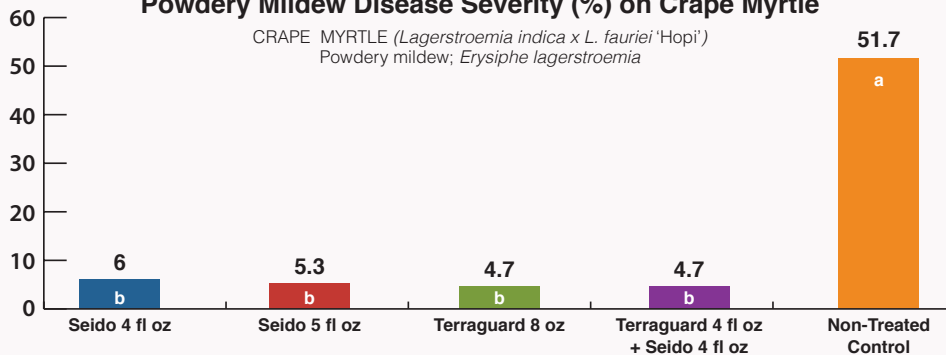


*All leaves were inoculated with *S. cucurbitae*.
 *Assessment: 10 days after inoculation and treatment.



Powdery Mildew Disease Severity (%) on Crape Myrtle

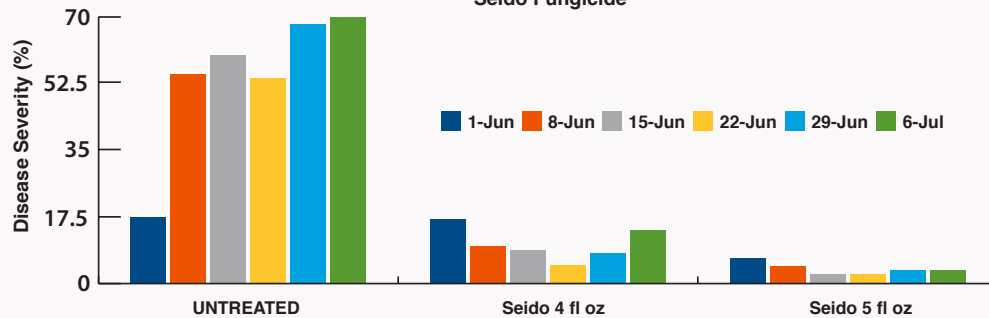
CRAPE MYRTLE (*Lagerstroemia indica* x *L. fauriei* 'Hopi')
 Powdery mildew; *Erysiphe lagerstroemia*



*Application dates: 1=1 Oct; 2=15 Oct; 3=29 Oct; Values are the means of six replications; treatments with the same letter are not significantly different at P<0.05.
 F. Baysal-Gurel, T. Simmons, and C. Jennings, Tennessee State Univ., McMinnville, TN

POWDERY MILDEW / GERBERA

Seido Fungicide



* 3 applications, 14 days apart starting 25 May

B. Uber 2019

Use of SEIDO according to the labeling is subject to the use precautions and limitations imposed by the label affixed to the container of SEIDO. It is a violation of Federal law to use this product in a manner inconsistent with its labeling.

Pyriofenone is an invention of Ishihara Sangyo Kaisha, Ltd., and manufactured and developed by ISK Biosciences Corporation.

SEIDO is a trademark of OHP, Inc.

© OHP, Inc. 06/2021



An American Vanguard Company

PO Box 746
 Bluffton, SC 29910-0746
 Technical Service: 800-356-4647
 ohp.com

PIB678 06/2021