

NOTES:

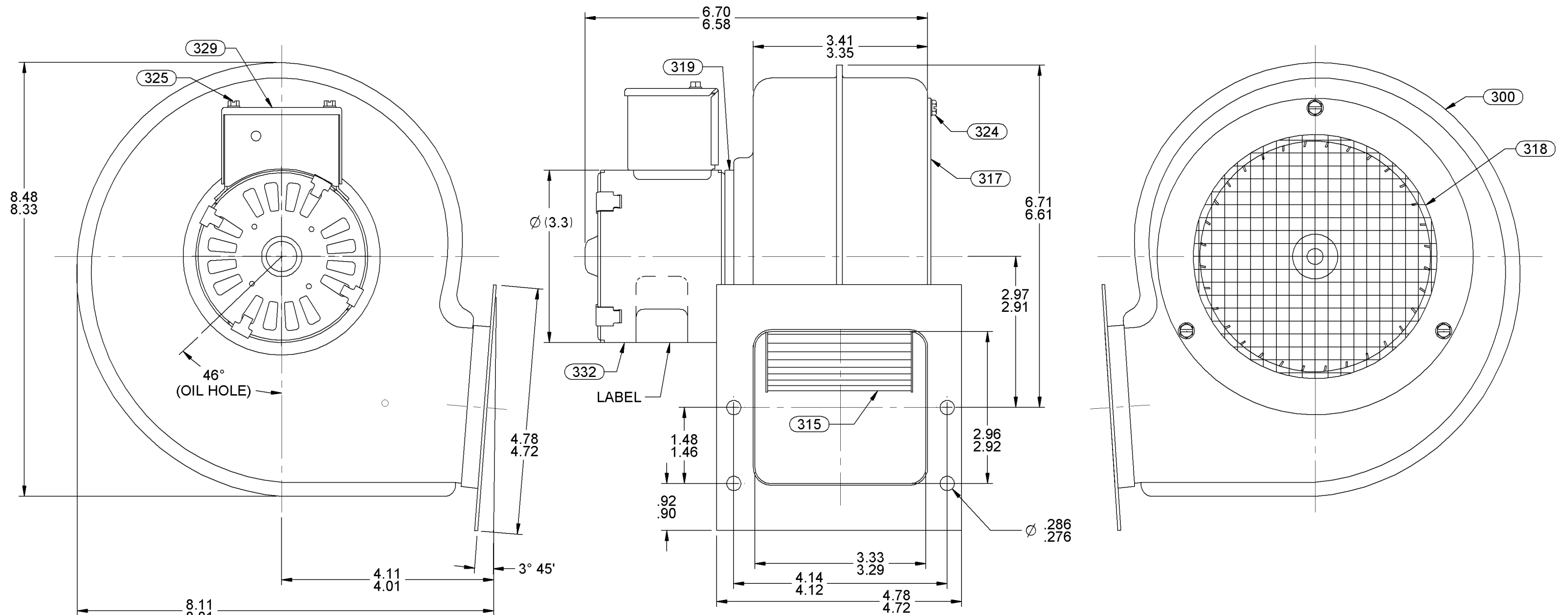
1. COIL LEADS INSIDE CONDUIT BOX, AND SECURE COVER WITH PC. 325 SCREWS.
2. NO KNOCKOUT REMOVED.
3. INDIVIDUAL PACK - 1 PER CONTAINER, 64 MAX. PER PALLET, PACKING ASSY: 87854856, 16 CONTAINERS PER LAYER, 4 LAYERS PER PALLET, P.S. 88834200, P.S. 88834408. BULK PACK - 8 PER CONTAINER, 96 MAX. PER PALLET, PACKING ASSY: 87854386, P.S. 88834200, P.S. 88834408.
4. LOCATION OF IMPELLER TO BE .240/.160 FROM EDGE OF IMPELLER TO INSIDE OF HOUSING SHELL.
5. TRAP PC. 318 SCREEN BETWEEN PC 317 INLET RING AND HOUSING, SECURE WITH PC 324 SCREWS.
6. CARTON LABELS MUST ALL FACE ONE DIRECTION TOWARD THE OPEN END OF THE PALLET. SEE P.S. 88834408.
7. NO PACKAGING TAPE OVER CARTON LABEL.

APPLICATION

THERMALLY PROTECTED

B	LA	FR	A	S	C	E	B	A
03	63	30	V	03	DY	5	3	0
CUSTOMER FASCO DIST								
CUSTOMER PART NO. 50755-D500								

LEAD MATERIAL
 18 GA. 125° C, 2/64 INSUL.
 X-LINKED POLY, (2) BLK
 8.00/6.00 IN. LONG
 .68/.56 IN. STRIP



TYPICAL PERFORMANCE TEST DATA IN FREE AIR

AT 115 VOLTS 60 HZ.

ECO. NO.	REV.	DATE	APPROVAL
4003513	45	10/21/2011	BGP/SDM
4009803	46	7/22/2013	PLA/KSA

R.P.M.	WATTS	AMPS
1450	71	1.06
BLOWER WEIGHT LBS.		END PLAY .050/.010

UNLESS OTHERWISE SPECIFIED DIMENSIONS ARE IN INCHES TOLERANCES ARE:
 FRACTIONS ± 1/16 DECIMALS XX ± .01 ANGLES ± 1°
 XXX ± .005

APPROVALS	DATE
DRAWN JMH	05/15/2002
CHECKED SRM	05/15/2002
FINISH COLOR BLACK	

FASCO FASCO MOTORS GROUP
 AC MOTOR/BLOWER DIVISION

CONFIDENTIAL: DO NOT DUPLICATE OR DISCLOSE TO THIRD PARTIES WITHOUT WRITTEN PERMISSION OF FASCO MOTORS GROUP, AC MOTOR/BLOWER DIVISION.

TITLE BLOWER ASSEMBLY		
SIZE B	DWG. NO. 7063 1543	REV. 46
DO NOT SCALE DRAWING		SHEET 1 OF 1